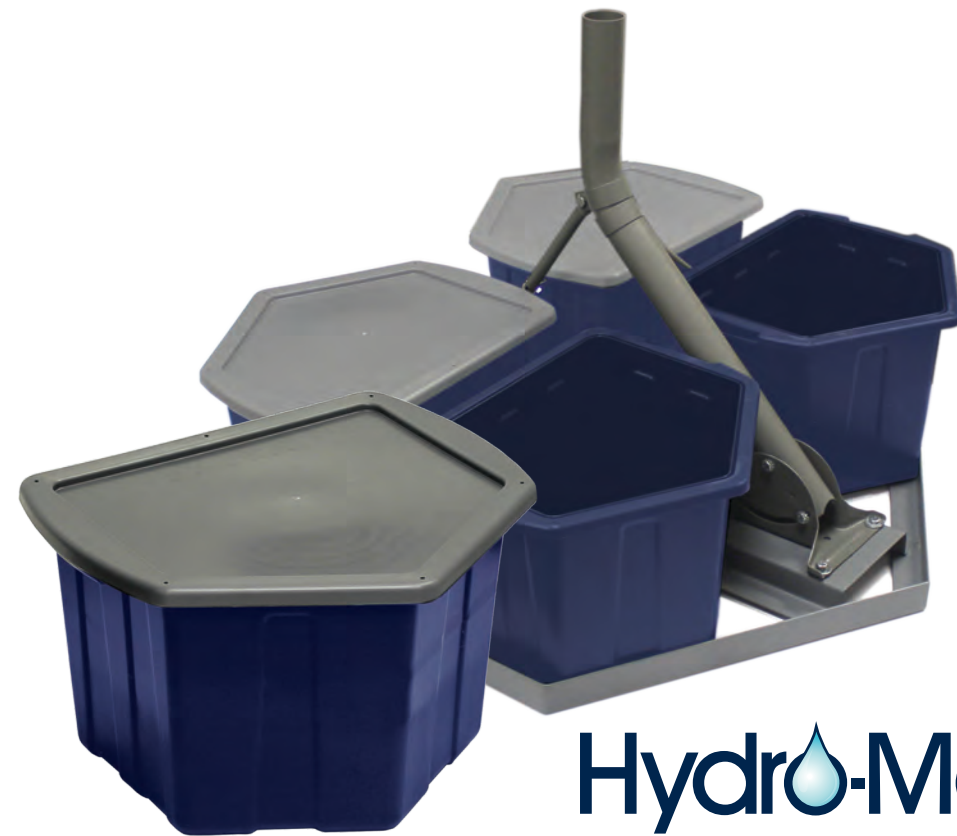


Hydro-Mount®



Hydro-Mount®
The Efficient System for
Non-penetrating Installations



The Efficient
Non-penetrating
Installation System



Hydro-Mount[®]

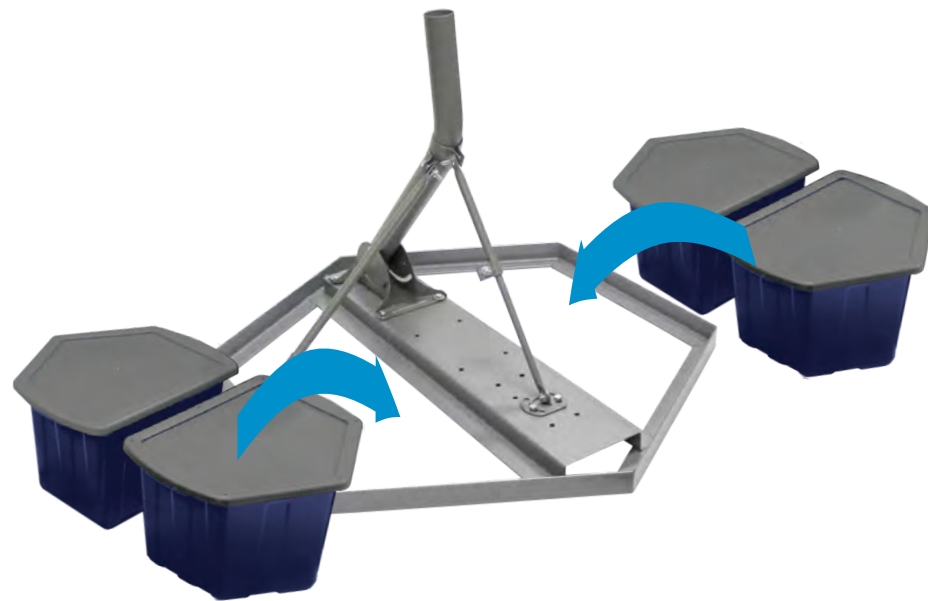
The Efficient Non-penetrating Installation System

- Compact nesting saves time and space
- No more broken blocks and messy fragments
- Reduces vehicle weight for better fuel economy
- Environmentally friendly, fills with water only

FEATURES

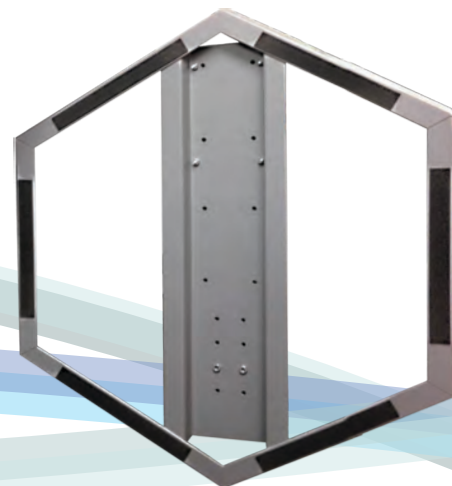
Hydro-Mount Bins

- Ergonomic hand grips
- Light durable plastic
- 6 easy screw mounting points
- Designed with a water line, leaving room for freezing expansion
- Recyclable Polypropylene
- No chemical additives



NPR9 Mount

- Designed specifically for Hydro-Mount bins
- More compact size and shape DTV mounting holes with applied threading bosses, for simplified installation (same as NPR8 feature)
- Non slip pads applied - 6 pads, 12 in length, 3mm thick



An aesthetically pleasing professional install solution for your customers

PerfectVision's non-penetrating Hydro-Mount system is a proprietary design for a faster, easier, more effective installation. This hexagonal shaped mount utilizes light weight plastic Hydro-Mount bins that replace the traditional cinder block ballast. These bins are weighted by filling them with water on your install site. These 4 bins displace the same weight as the cinder blocks they replace.

- Reduce overall installation time
- Lower transportation cost through weight savings
- Nested Hydro-Mount bins stack neatly and save space
- Lightweight modular bins
- Eliminate the back and forth trips carrying cinder blocks
- Easy, simple to install, no special tools required

